

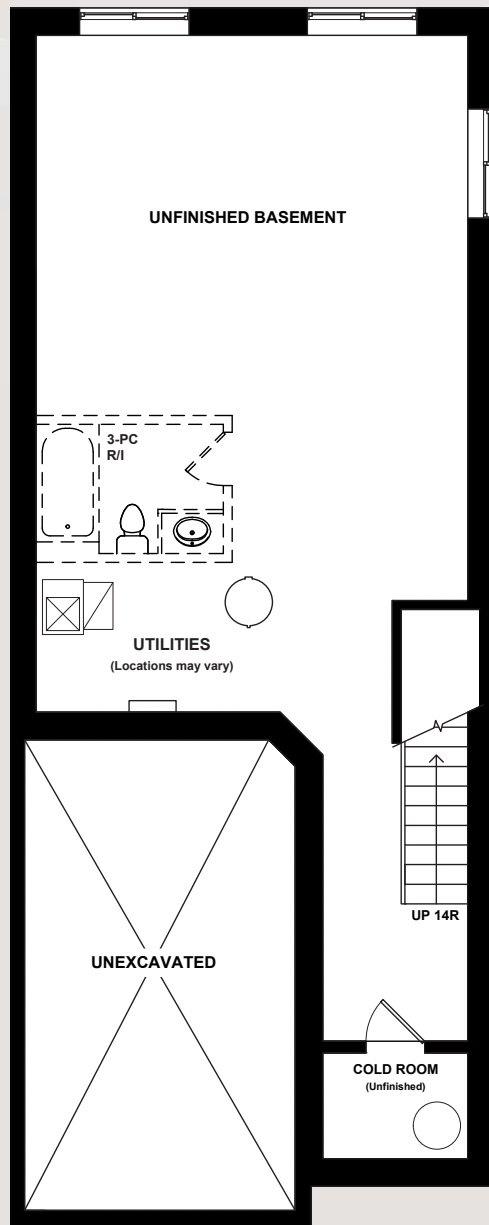


# CHESTNUT

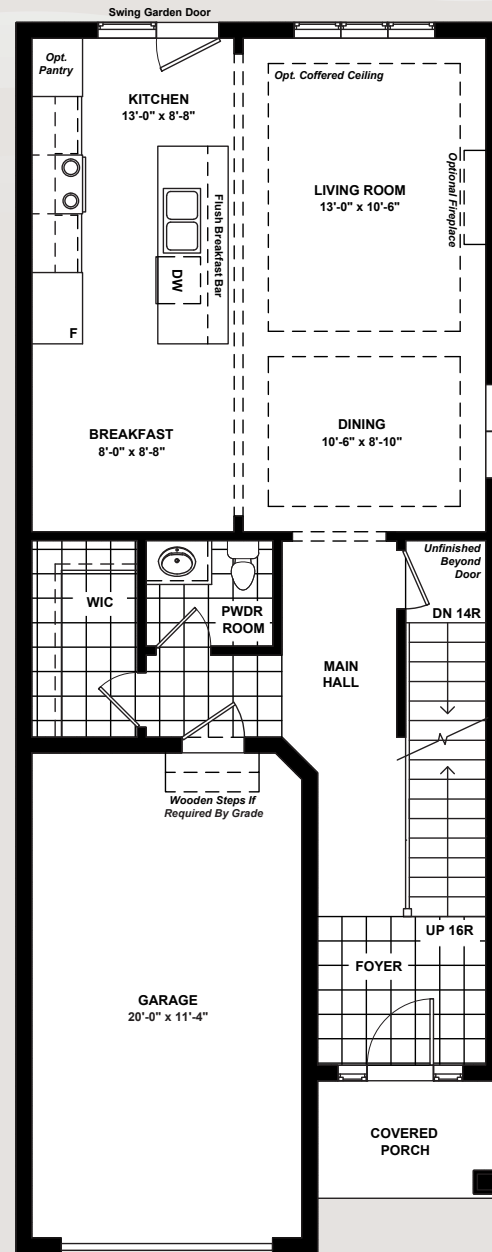
This unit is displayed on the right of the render above. Actual usable floor space may vary from the stated floor area. Plans and elevations are artist's renderings and may contain options which are not standard on all models. Dunsire Homes Inc reserves the right to make changes to these floorplans, specifications, dimensions and elevations without prior notice and without compensation. Stated dimensions and square footages are approximate and should not be used as representation of the home's usable floor space or actual size. Any square footage of a single-family home or a multi-family home that is stated herein is approximate only, may vary from time to time, and remains subject to change without notice or compensation.



[www.Dunsire.com](http://www.Dunsire.com)

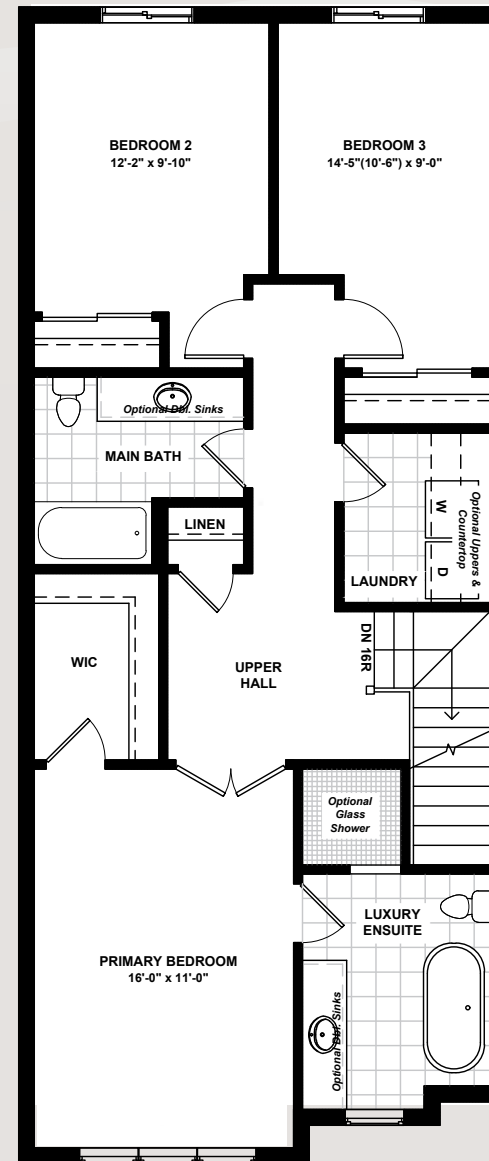


UNFINISHED BASEMENT



STANDARD MAIN FLOOR

679 SQ.FT.



SECOND FLOOR

982 SQ.FT.



MEADOW  
HEIGHTS  
PORT COLBORNE

# CHESTNUT



1,661 Sq.Ft.



3 Bedrooms

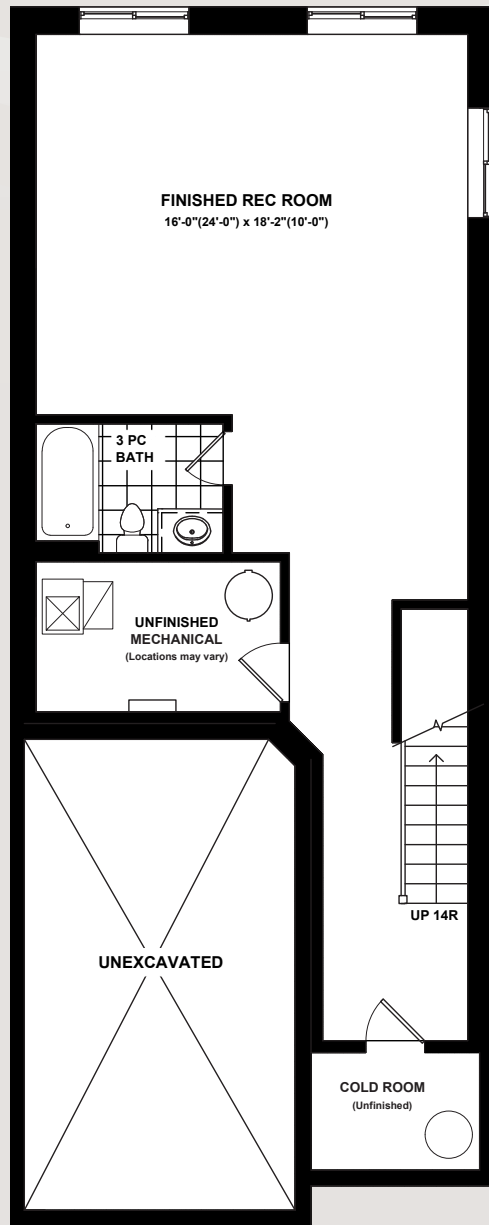


2.5 Bathrooms

 **DUNSIRE** | EST. 2010  
DEVELOPMENTS

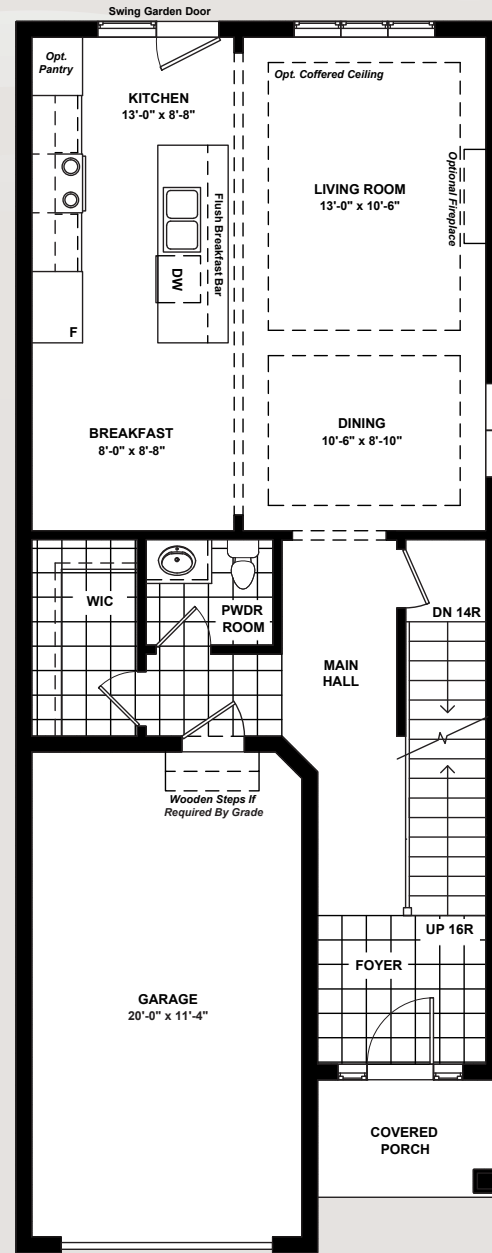
[www.Dunsire.com](http://www.Dunsire.com)

Actual usable floor space may vary from the stated floor area. Plans and elevations are artist's renderings and may contain options which are not standard on all models. Dunsire Homes Inc reserves the right to make changes to these floorplans, specifications, dimensions and elevations without prior notice and without compensation. Stated dimensions and square footages are approximate and should not be used as representation of the home's usable floor space or actual size. Any square footage of a single-family home or a multi-family home that is stated herein is approximate only, may vary from time to time, and remains subject to change without notice or compensation.



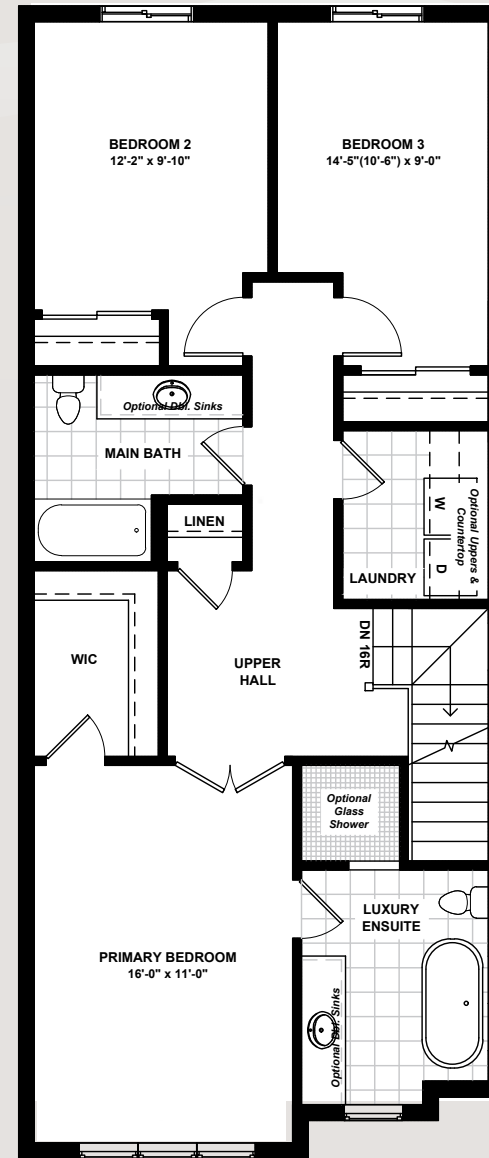
OPT. FINISHED BASEMENT

664 SQ.FT.



MAIN FLOOR WITH  
OPT. FINISHED BASEMENT

679 SQ.FT.



SECOND FLOOR

982 SQ.FT.



MEADOW  
HEIGHTS  
PORT COLBORNE

# CHESTNUT



2,325 Sq.Ft.



3 Bedrooms

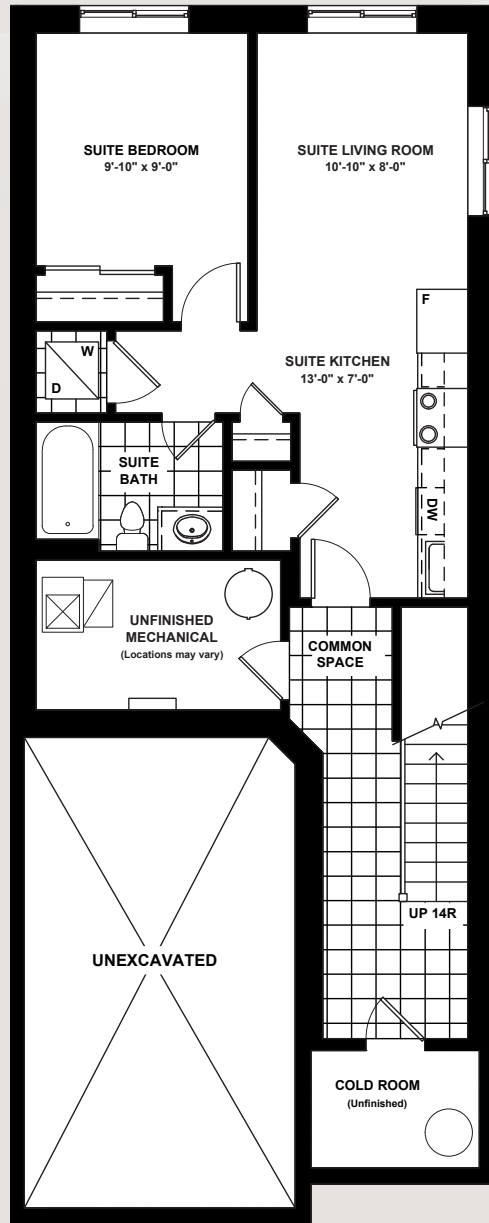


2.5+1 Bathrooms

 **DUNSIRE** | EST. 2010  
DEVELOPMENTS

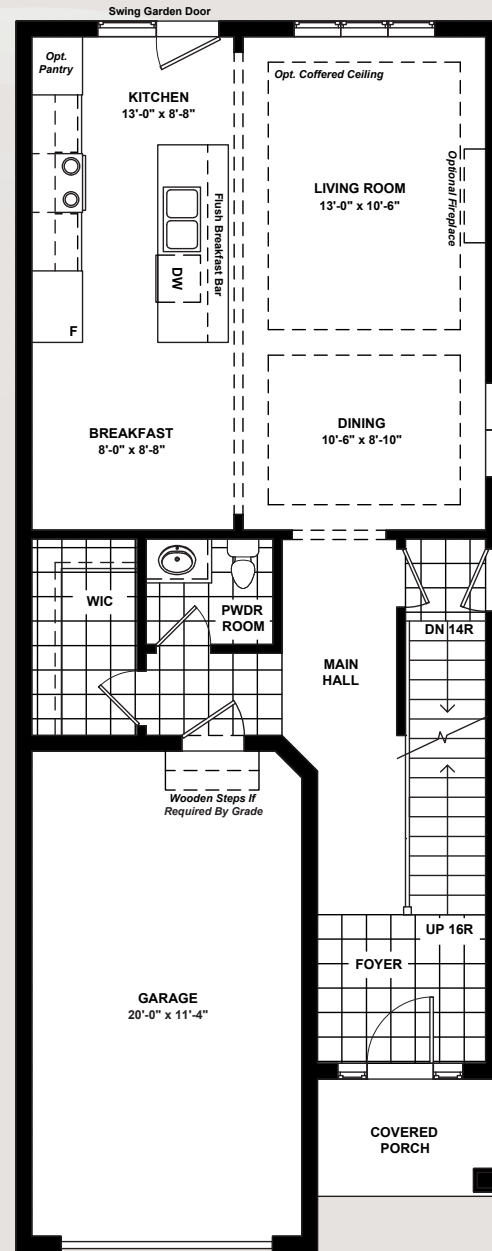
[www.Dunsire.com](http://www.Dunsire.com)

Actual usable floor space may vary from the stated floor area. Plans and elevations are artist's renderings and may contain options which are not standard on all models. Dunsire Homes Inc reserves the right to make changes to these floorplans, specifications, dimensions and elevations without prior notice and without compensation. Stated dimensions and square footages are approximate and should not be used as representation of the home's usable floor space or actual size. Any square footage of a single-family home or a multi-family home that is stated herein is approximate only, may vary from time to time, and remains subject to change without notice or compensation.



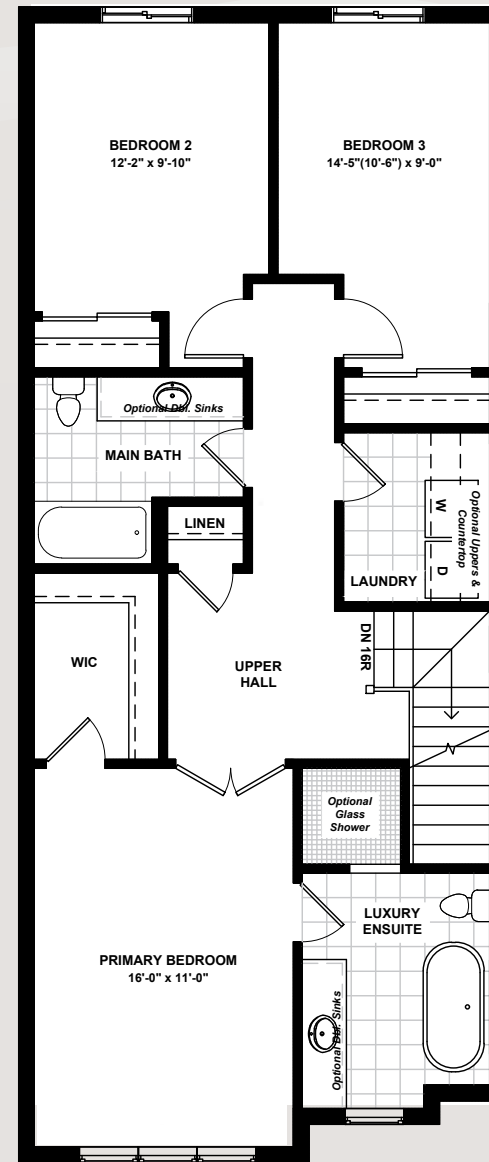
OPT. ADU 493 SQ.FT.

COMMON SPACE 171 SQ.FT.



OPT. MAIN FLOOR  
WITH ADU ENTRY

679 SQ.FT.



SECOND FLOOR

982 SQ.FT.



MEADOW  
HEIGHTS  
PORT COLBORNE

# CHESTNUT



2,325 Sq.Ft.



3+1 Bedrooms



2.5+1 Bathrooms

 **DUNSIRE** | EST. 2010  
DEVELOPMENTS

[www.Dunsire.com](http://www.Dunsire.com)

Actual usable floor space may vary from the stated floor area. Plans and elevations are artist's renderings and may contain options which are not standard on all models. Dunsire Homes Inc reserves the right to make changes to these floorplans, specifications, dimensions and elevations without prior notice and without compensation. Stated dimensions and square footages are approximate and should not be used as representation of the home's usable floor space or actual size. Any square footage of a single-family home or a multi-family home that is stated herein is approximate only, may vary from time to time, and remains subject to change without notice or compensation